



MAMA DOES DERBY

VISUAL STORY

Sydney
Festival
2026



WHAT IS A VISUAL STORY?

A Visual Story is a visual & written accessible guide to assist you with your visit.

Visual stories are used to prepare a person for and increase the predictability of a new environment or situation. This helps bring familiarity to a process and to reduce anxiety and stress.

This guide provides information on how to access The Censor performance, and what to expect when you arrive and who to ask for assistance.

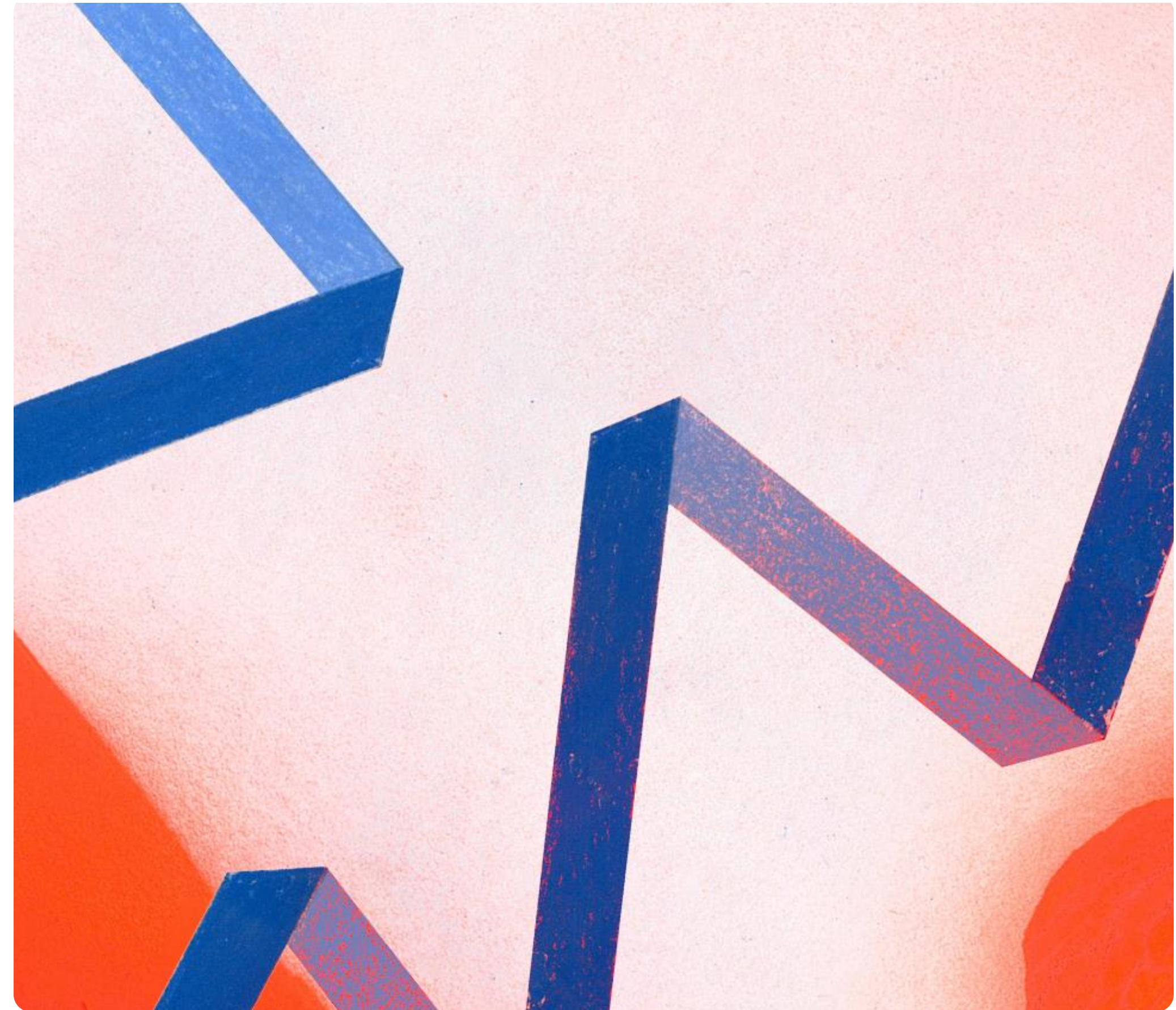
ABOUT SYDNEY FESTIVAL

Mama Does Derby is part of Sydney Festival 2026 program. Sydney Festival is a city wide celebration of culture and creativity.

From the streets to the beach, in stately theatres and in secret basements, it animates locations across Greater Sydney with a free and ticketed program of theatre, music, dance, visual art and live performance.

We welcome all visitors to Sydney Festival events and are committed to making the festival a safe and accessible space for everyone.

I can find out more accessibility information about Sydney Festival on the website:
www.sydneyfestival.org.au/accessibility



ABOUT MAMA DOES DERBY

A single mum, a teenage daughter, and a new life in a regional town where neither quite fits. Billie is 16 and restless, trying to navigate the chaos of adolescence. Mum, meanwhile, is spinning into a rebellion of her own – in the sweaty, rough and radical world of roller derby.

Fresh from winning the 2024 Scotsman First Fringe Award for Outstanding New Writing for her play *Cyrano*, writer and actress Virginia Gay (Calamity Jane) returns with this heartwarming and boisterous story about what holds a family together. Conceived and directed by Windmill's Clare Watson, this world premiere production turns the Sydney Town Hall into a full-scale roller derby track for an epic mother-daughter story where theatre, sport, live music and immersive spectacle collide.

Action-packed, hilarious and heartfelt, *Mama Does Derby* is about resilience and reinvention, about getting knocked down and getting back up again.



The performance of Mama Does Derby will be held at the Sydney Town Hall.

Sydney Town Hall is one of Sydney's most iconic civic landmarks.

Located on George Street in the heart of the city, Sydney Town Hall is wheelchair accessible and offers amenities such as accessible toilets, lifts, and level-entry access via Drutt Street. If you need this entrance, let Sydney Festival staff and volunteers know.

You can find more details about venue accessibility here:

<https://www.cityofsydney.nsw.gov.au/landmarks/sydney-town-hall>



WHEN IS THE PERFORMANCE ON?

Mama Does Derby runs from the 15th to the 22nd January 2026.

Below are the show date and times I can book into:

Thursday 15th January, 6:30 pm

Friday 16th, 6:00pm

Saturday 17th, 1:00pm and 6:30pm

Sunday 18th, 2:00pm and 6:30pm

Tuesday 20th, 7:00pm

Wednesday 21st, 7:00pm

Thursday 22nd, 7:00pm



RELAXED SESSIONS

Designed for patrons with disability and their families or anyone who may benefit from a more relaxed environment. Relaxed performances usually have slight modifications to sound and lighting, support aids and an open-door policy with a dedicated quiet area.

Relaxed session is available for:
Sunday, 18th January at 2:00pm



THINGS THAT I CAN BRING

I can bring some things that help me feel calm and safe.

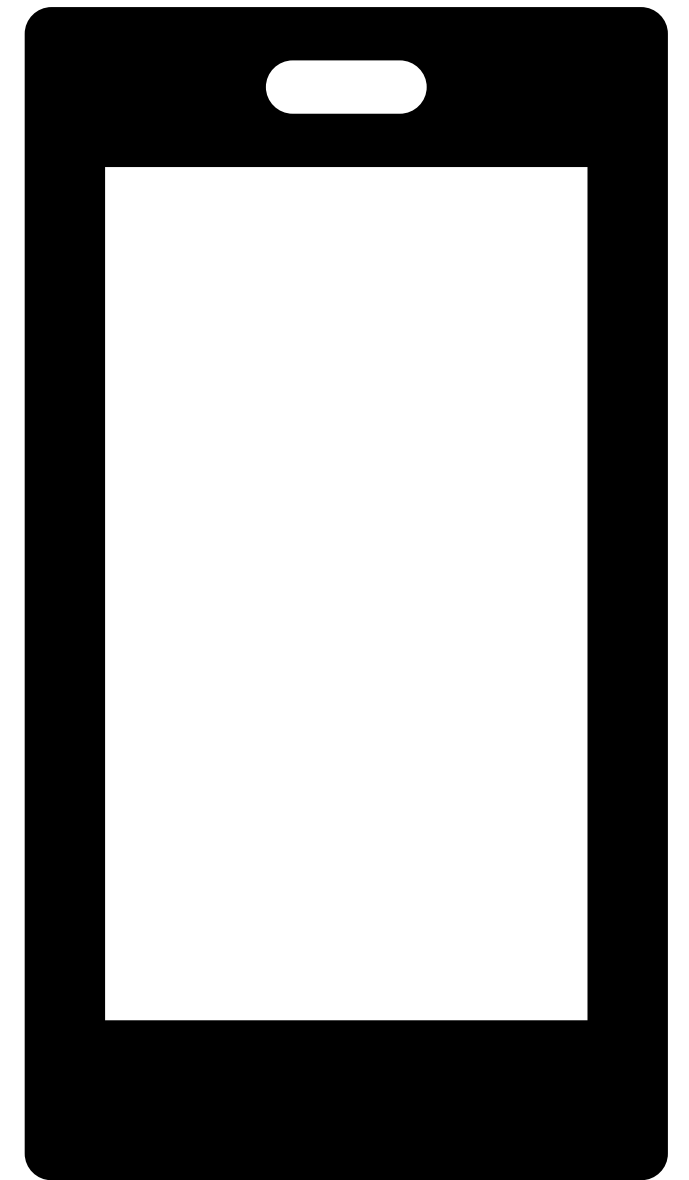
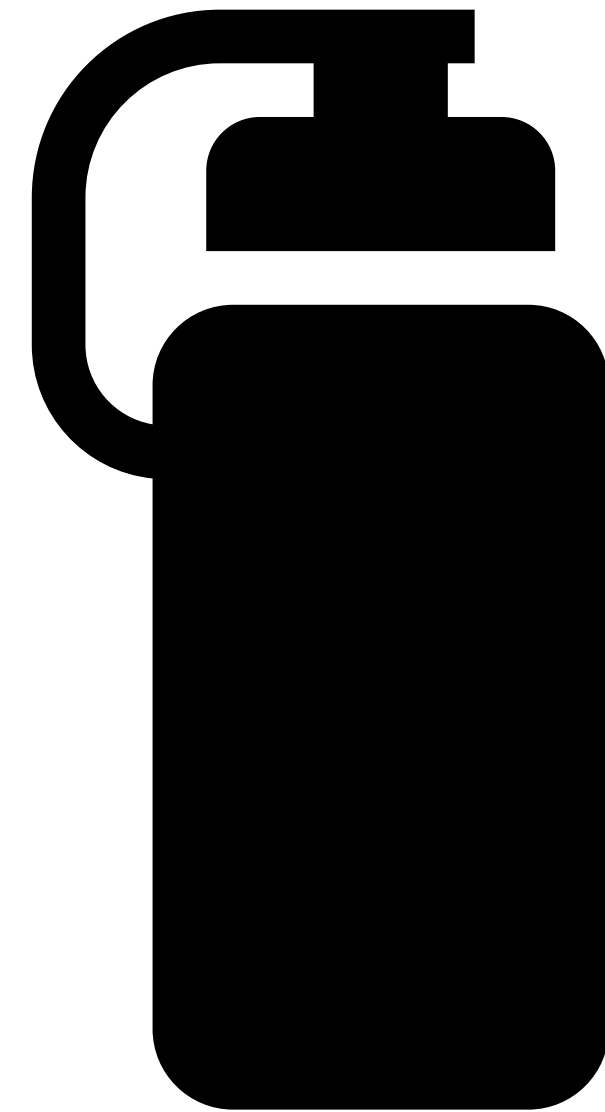
These might include:

Noise cancelling headphones

Sensory items

Water bottle

Mobile Phone



HOW TO BOOK MY TICKET?

I can book my ticket on the Sydney festival website here:

<https://tickets.sydneyfestival.org.au>

When I book into a session, I can choose my seat by selecting it on the seating map. I can book multiple seats for the one performance by clicking on more than one seat.

Colour chart for seating availability are:
Black: Unavailable
Light Blue: Available
Orange: Low Availability

DATES						
Mon	Tue	Wed	Thu	Fri	Sat	Sun
			1	2	3	4
5	6	7	8	9	10	11
12	13	14	15	16	17	18
19	20	21	22	23	24	25
26	27	28	29	30	31	

GETTING THERE

The performance is located at:

483 George Street, Sydney NSW 2000

I can get to Sydney Town Hall

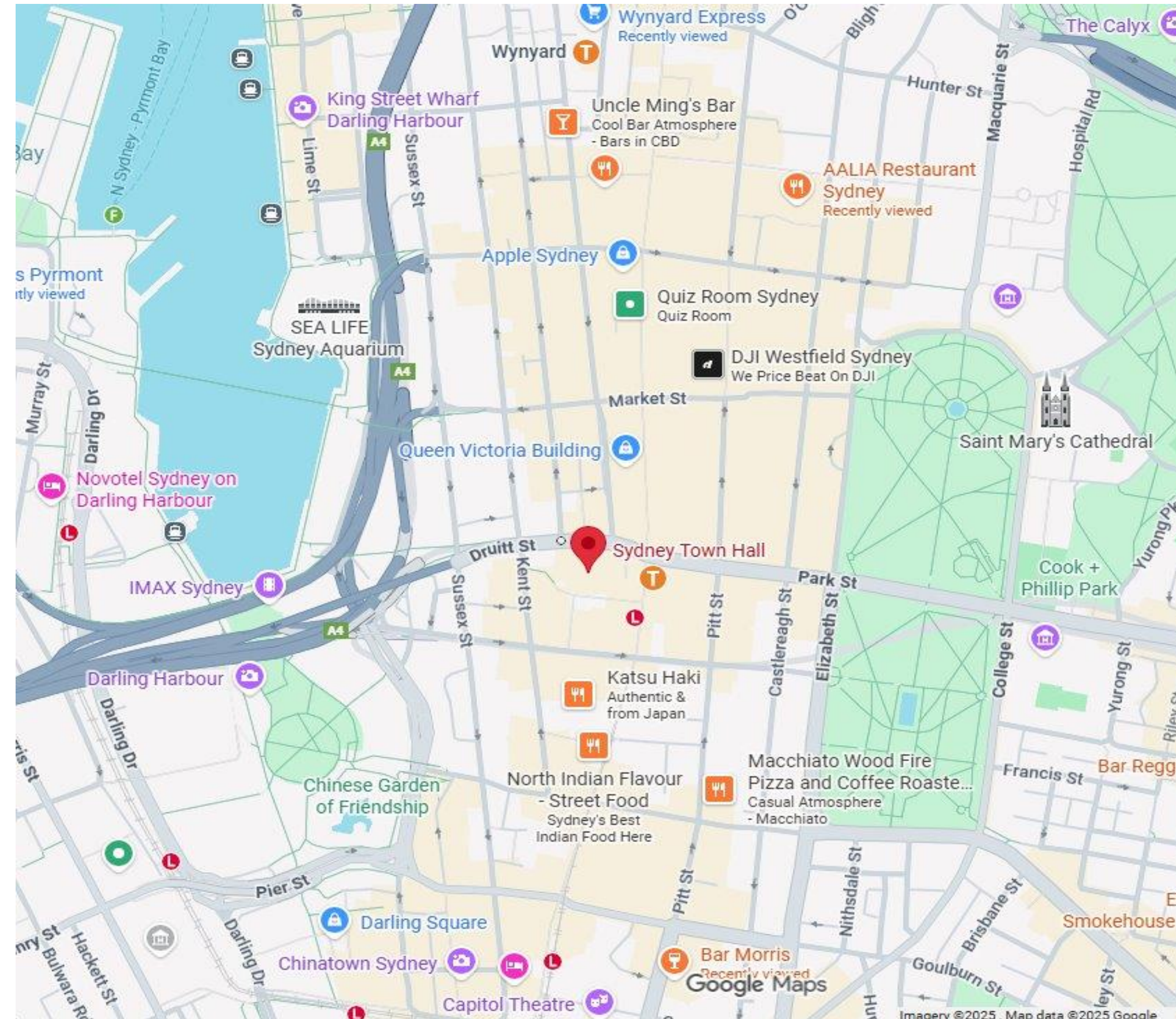
by train, bus, walking, light rail, taxi or by car.

Sydney Town Hall is in the heart of the CBD, directly above Town Hall Station, and is easily accessible by public transport.

I can park at nearby Wilson Parking stations such as St Andrews House Car Park, Queen Victoria Building Car Park, or Citipark Car Park — all are paid parking options.

More information about parking is here:

<https://www.wilsonparking.com.au/attractions/nsw/sydney-town-hall/>



PUBLIC TRANSPORT/ WALKING/ TAXI OR RIDESHARE/CAR

BY PUBLIC TRANSPORT

Sydney Town Hall is located directly above Town Hall Station, which is served by multiple train lines and is a major hub for buses and light rail. It’s also within easy walking distance of many CBD destinations.

For more information about public transport around Sydney, call 131 500 or visit the Transport Info website.

BY TAXI / RIDESHARE / CAR

Visitors arriving by taxi or rideshare can use the designated drop-off zones near George Street and Druitt Street entrances.

Parking is not available on-site, but there are several nearby paid parking options, including Wilson Parking at Queen Victoria Building, St Andrews House, and Citipark Car Park.

More details about parking can be found [here](#).

CHECK IN/ TICKETING

I will need a ticket to see the show. If I haven't got a ticket, when I arrive, I can go to the Sydney Festival Box Office to get a ticket. I will need to wait in a line.

Before the show starts, I might need to wait in the foyer. This is where I can relax with my family or friends until the performance starts.

I can enter the theater doors approximately 10-15 minutes prior to the show starting.



FINDING MY SEAT

My ticket will have the door number I need to enter through. An usher will check my tickets and tell me where the door is. Then I can enter the theatre.

Inside the theatre there are red seats. There is tiered seating.

An usher will help me find the seat that matches my ticket.



BEFORE THE PERFORMANCE STARTS

When the show starts the lights will turn down to make the theatre darker, but it will not go completely dark.

This is now the time I can sit quietly to listen and watch the performance. If I need to talk to my friends or family during the show I can whisper.

I will be seeing a theatre show, not a movie. There will be real people on stage called performers. They might play music, sing, dance or tell me a story. They might wear costumes or make-up. This helps them to tell the story.



WHAT TO EXPECT DURING THE PERFORMANCE

The performance takes about 1 hour and 30 minutes
Some things I will see and hear during the performance are:

- Strong Language
- References to violence, sexual content and mental health
- Theatrical smoke, haze and strobe effects
- Live music
- Roller skaters in a roller skating rink

If I arrive late, I will be admitted at an appropriate break in the performance.

I should arrive early to avoid missing the start.



END OF THE PERFORMANCE

When the show is finished, people will clap their hands. This is to thank the performers. I can clap along if I want to, if it is too loud, I can use my noise cancelling headphones.

When the performance is finished, the lights will turn on and I can exit the theatre at one of the open doors, an usher will be there to help guide the way.



TOILETS

I can find accessible toilets inside Sydney Town Hall; they will be clearly marked with signage.

If I need assistance, the staff at Sydney Town Hall can help me locate the toilets.

It's a good idea to use the toilet before or after the performance so I don't miss anything exciting.



WHO WILL I SEE, AND WHO CAN HELP ME?

If I need help, I can ask a Sydney Festival Front of House Staff Member who be working throughout the performance. They will be able to provide me with information and help with first aid.

I can identify them by their bright coloured shirt with a Sydney Festival logo.



QUIET SPACES SUNFLOWER AND HIDDEN DISABILITIES LANYARD

I can exit the performance at any point if I need to.

Hidden Disabilities Sunflower Lanyard

The Sunflower is a globally recognised symbol for Hidden Disabilities.

- The lanyard is a way that people with Hidden Disabilities can indicate to staff that they may need extra support, time and understanding.
- If I have a Sunflower lanyard I can bring it with me, and the Front of House Staff are trained to recognise it.
- It is OK if I don't have a lanyard, I can still get help if I need.



THANK YOU
FOR VISITING



We hope you enjoy your visit to
Mama Does Derby at Sydney Festival