



# ASSES.MASSES

VISUAL STORY

Sydney  
Festival  
2026





# WHAT IS A VISUAL STORY?

---

A Visual Story is a visual & written accessible guide to assist you with your visit.

Visual stories are used to prepare a person for and increase the predictability of a new environment or situation. This helps bring familiarity to a process and to reduce anxiety and stress.

This guide provides information on how to access the asses.masses performance, and what to expect when you arrive and who to ask for assistance.

# ABOUT SYDNEY FESTIVAL

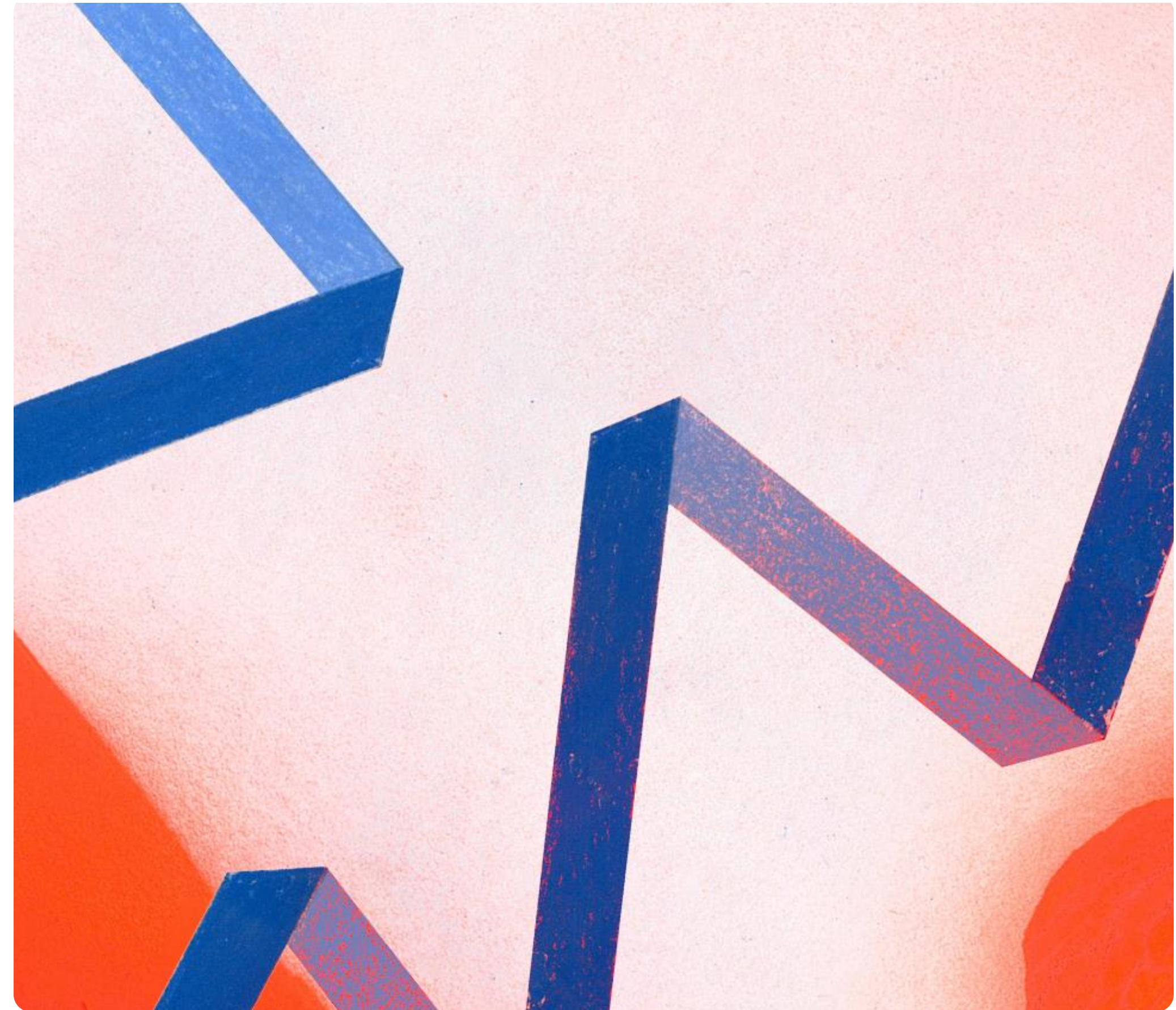
---

Asses.Masses is part of Sydney Festival 2026 program. Sydney Festival is a city wide celebration of culture and creativity.

From the streets to the beach, in stately theatres and in secret basements, it animates locations across Greater Sydney with a free and ticketed program of theatre, music, dance, visual art and live performance.

We welcome all visitors to Sydney Festival events and are committed to making the festival a safe and accessible space for everyone.

I can find out more accessibility information about Sydney Festival on the website:  
[www.sydneyfestival.org.au/accessibility](http://www.sydneyfestival.org.au/accessibility)





## Will you lead the first ever donkey protest?

In this epic, seven-hour video game, you take turns with fellow audience members to lead a herd of cheeky, rebellious donkeys to get their jobs back. Don't worry, there are intervals and snacks provided throughout this communal gaming adventure.

Bring your friends and get ready to make new ones in this provocative and engaging gaming marathon. One-by-one and with commentary from the crowd, together you will tackle 2D and 3D game genres, from side-scroller beat-'em-ups to trivia quizzes, Guitar Hero-style button mashers, a rock n' roll version of Pong and much more, as the donkeys go burro-ing through a post-Industrial world.

This is theatre where you control the action, literally, and work collaboratively to overcome the puzzles and challenges encountered along the way. Laced with bawdy humour and social commentary, asses.masses will challenge your ass-umptions of what a live theatre experience can be.





# ABOUT THE VENUE

---

The performance of asses.masses will be held at the Drama Theatre, Sydney Opera House.

Sydney Opera House is Sydney's premier performing arts centre with over 5,000 events per year.

Located at Circular Quay, Sydney Opera House is wheelchair accessible and has other accessible amenities, including accessible toilets.

I can find out more about venue accessibility here:  
<https://www.sydneyoperahouse.com/visit/accessibility>





# WHEN IS THE PERFORMANCE ON?

---

asses.masses runs from the 24th to the 25th January 2026.

Below are the show date and times I can book into:

Saturday 24th January, 1:00 pm

Sunday 25th January, 1:00 pm





## RELAXED SESSIONS

---

Designed for patrons with disability and their families or anyone who may benefit from a more relaxed environment. Relaxed performances usually have slight modifications to sound and lighting, support aids and an open-door policy with a dedicated quiet area.

Relaxed session is available for:  
Monday, 19th January at 6:00pm



# THINGS THAT I CAN BRING

---

I can bring some things that help me feel calm and safe.

These might include:

Noise cancelling headphones

Sensory items

Water bottle

Mobile Phone





# HOW TO BOOK MY TICKET?

I can book my ticket on the Sydney festival website here:

<https://tickets.sydneyfestival.org.au>

When I book into a session, I can choose my seat by selecting it on the seating map. I can book multiple seats for the one performance by clicking on more than one seat.

Colour chart for seating availability are:  
Black: Unavailable  
Light Blue: Available  
Orange: Low Availability

Mon	Tue	Wed	Thu	Fri	Sat	Sun
			1	2	3	4
5	6	7	8	9	10	11
12	13	14	15	16	17	18
19	20	21	22	23	24	25
26	27	28	29	30	31	



# GETTING THERE

The performance is located at:

Bennelong Point, Sydney NSW 2000

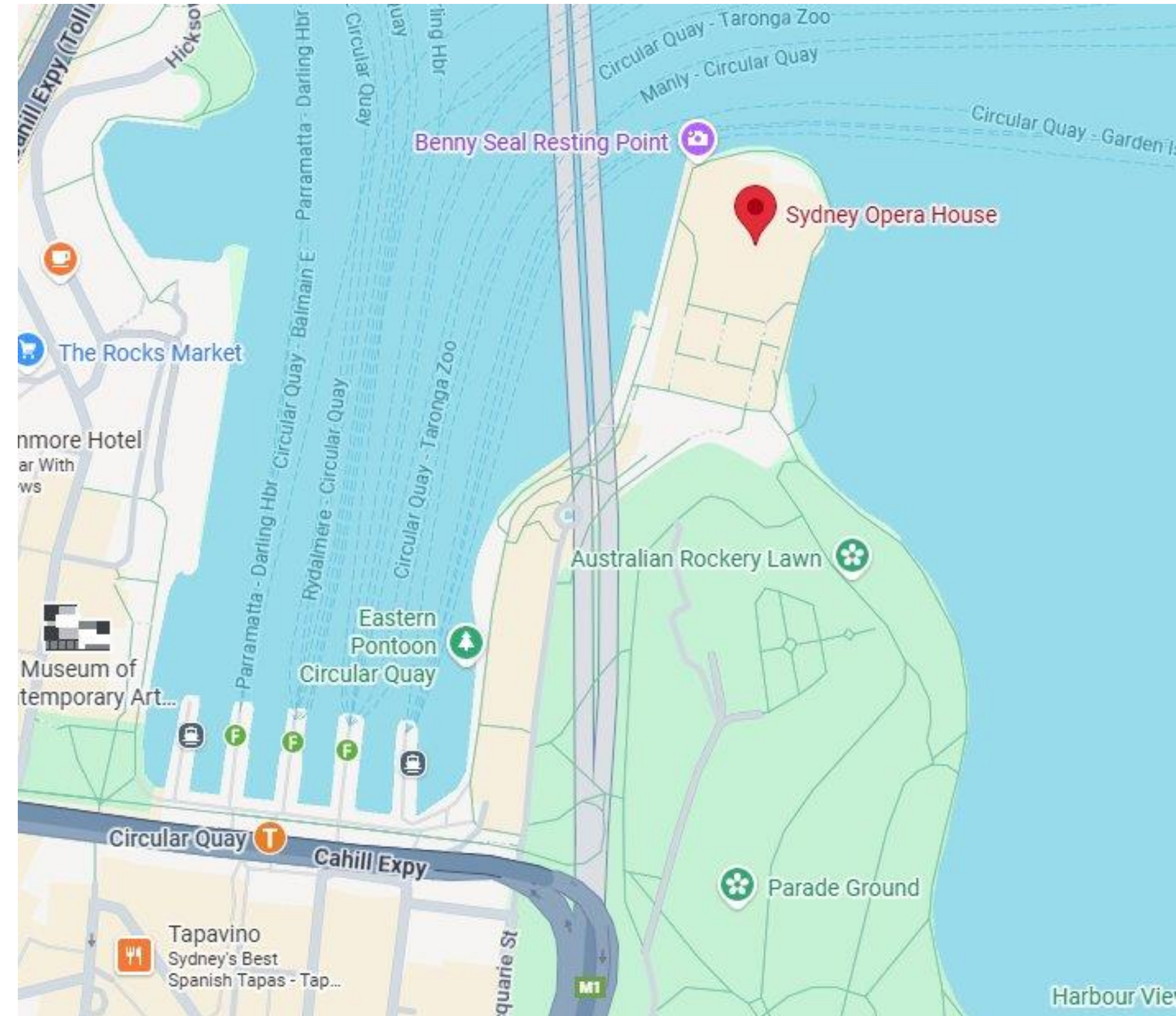
I can get to Sydney Opera House by train, bus, walking, ferry, taxi or by car.

Sydney Opera House is a 10-minute drive

from Sydney CBD. I can park at the Wilson Parking's Sydney Opera House Car Park which is paid parking.

More information about parking is here:

<https://www.sydneyoperahouse.com/visit/getting-here/parking>





# PUBLIC TRANSPORT/ WALKING/ TAXI OR RIDESHARE/CAR

---

## BY PUBLIC TRANSPORT

The Sydney Opera House is a six-minute walk from Circular Quay, which is regularly served by public buses, trains and ferries to Circular Quay.

To get information about public transport around Sydney call 131 500 or visit the Transport Info website.

## BY TAXI / RIDESHARE / CAR

Visitors and patrons arriving and leaving by taxis and private vehicles will be directed to the designated taxi rank on Macquarie Street, past the Wilson's Carpark entrance.

Visitors with accessibility requirements who wish to park on site will be directed to Wilson Parking as accessible parking is no longer available on the Concourse beneath the Monumental Steps.

A free wheelchair accessible Courtesy Bus is available to carry passengers to and from Circular Quay and the Opera House doors for matinee and evening performances.



# CHECK IN/ TICKETING

I will need a ticket to see the show. If I haven't got a ticket, when I arrive, I can go to the Box Office to get a ticket. I will need to wait in a line.

Before the show starts, I might need to wait in the foyer. This is where I can relax with my family or friends until the performance starts.

I can enter the theater doors approximately 10-15 minutes prior to the show starting.





# FINDING MY SEAT

My ticket will have the door number I need to enter through. An usher will check my tickets and tell me where the door is. Then I can enter the theatre.

Inside the theatre there are orange seats and a blue carpet floor. There is tiered seating.

An usher will help me find the seat that matches my ticket.

I can find a seating map online

Here (Drama Theatre).





# BEFORE THE PERFORMANCE STARTS

---

When the show starts the lights will turn down to make the theatre darker, but it will not go completely dark.

This is now the time I can sit quietly to listen and watch the performance. If I need to talk to my friends or family during the show I can whisper.

I will be seeing a theatre show, not a movie. There will be real people on stage called performers. They might play music, sing, dance or tell me a story. They might wear costumes or make-up. This helps them to tell the story.





# WHAT TO EXPECT DURING THE PERFORMANCE

The performance takes about 7 hours and 30 minutes (with 4 intervals)

Some things I will see and hear during the performance are:

Audience members who participate in the show and audience members who choose to spectate

- People playing the game on the screen
- Active spectatorship
- Flashing lights
- Violence
- Crude language
- Simulated donkey sex
- Simulated human sex
- References to suicide and police brutality

There is no lock out period so if I arrive late, I can enter whenever an usher is free to guide me to my seat safely.





# END OF THE PERFORMANCE

---

When the show is finished, people will clap their hands. This is to thank the performers. I can clap along if I want to, if it is too loud, I can use my noise cancelling headphones.

When the performance is finished, the lights will turn on and I can exit the theatre at one of the open doors, an usher will be there to help guide the way.





# TOILETS

I can find accessible toilets inside the venue; they will be clearly marked with a red sign on the outside.

The staff at the Sydney Opera House can help me find the toilets if I need help.

I should try to use the toilet before or after the performance, so that I don't miss out on anything exciting.





# WHO WILL I SEE, AND WHO CAN HELP ME?

If I need help, I can ask a Sydney Opera House Front of House Staff Member who be working throughout the performance. They will be able to provide me with information and help with first aid.

I can identify them by their white button up shirt, black blazer with a silver streak on left hand side of the collar with a Sydney Opera House name badge. They may also be in an orange polo shirt with black pants and a name badge.





# QUIET SPACES SUNFLOWER AND HIDDEN DISABILITIES LANYARD

I can exit the performance at any point if I need to.

## Hidden Disabilities Sunflower Lanyard

The Sunflower is a globally recognised symbol for Hidden Disabilities.

- The lanyard is a way that people with Hidden Disabilities can indicate to staff that they may need extra support, time and understanding.
- If I have a Sunflower lanyard I can bring it with me, and the Front of House Staff are trained to recognise it.
- It is OK if I don't have a lanyard, I can still get help if I need.





THANK YOU  
FOR VISITING



We hope you enjoy your visit to  
Asses.Masses at Sydney Festival