

# Laser Beak Man

## Social Story

Drama Theatre, Sydney Opera House



Thanks to Arts Centre Melbourne for the  
original Laser Beak Man visual story.

1. The production	1
2. The theatre and building	3
3. The performance	12
4. The story	18

# The Production

## Venue

This production of *Laser Beak Man* will be performed at the Drama theatre, which is inside the Sydney Opera House.

## Length

The play is 80 minutes with no interval. Doors will open earlier than usual so audiences can settle before the performance.

## Age Recommendation

Suitable for ages 8+. Families are encouraged to review warnings and talk to staff in order to assess appropriateness of content.

## Content Warnings

This production uses a haze machine, smoke machine, sound pressure effects and strobe effects. **In the Relaxed Performances of *Laser Beak Man* there will be no strobe lights. Localized smoke effects will be used instead of full haze effects. Overall, sound levels will be lower and louder moments reduced.**

## Theatre Guidelines

- Photography and mobile devices are not permitted during the performance, however if you need to use a device (i.e. iPad) to assist with communication, please inform the ushers. It's always fine to use a device in the foyer or quiet areas.
- During the Relaxed Performance, a relaxed attitude is taken to movement, noise and eating/drinking in the auditorium (this is okay).

- If you need to take a break during the show, you are welcome to come out into the foyer area. A quiet space will be available, with low lighting and sensory items. House lights will be up so audiences can easily come and go.

## **Photography**

Production photographs by Dylan Evans.

## **The Dead Puppet Society**

Dead Puppet Society are dedicated to “uniting an old-world aesthetic with cutting edge technical elements...where the mythic sits alongside the macabre, and the old school meets the technological”.

*Laser Beak Man* is a perfect demonstration of these values, with a blend of traditional theatrical approaches infused with activated scenery and large-scale animations that appear on LED screens, live performances of original music and controllable floating helium objects, creating an immersive and unique theatre experience that launches puppets into the twenty-first century and beyond.

Sharp’s work is a celebration of great artistry, imagination and hope; all things which the world truly needs right now, and which will hopefully contribute to challenging the limits we often impose on our concept of what constitutes the form, nature and purpose of theatre.

*“We believe that both Tim’s personal story of living with autism and that of Laser Beak Man deserve global celebration”*

*“We’re excited to highlight the intricacies of his creation alongside our own storytelling and aesthetic to make Tim’s hilarious drawings three-dimensional on stage.”*

- Dead Puppet Society Executive Producer Nicholas Paine



2

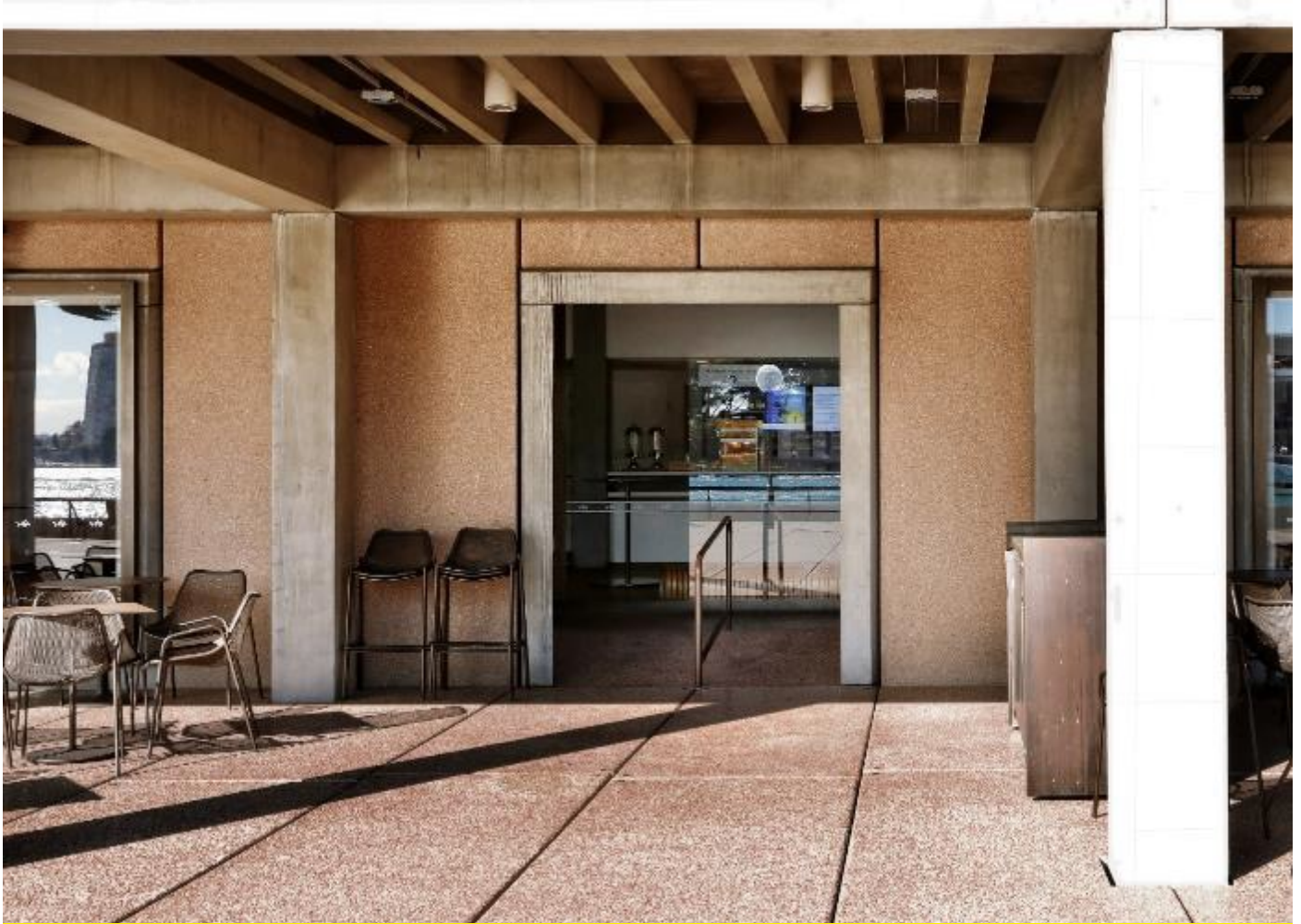
## The Theatre



When you arrive at the Sydney Opera House, you will travel across the forecourt to the entry doors.



There are two ways into the Western  
foyer of the Sydney Opera House.  
You can walk under the big stairs  
and through the doors.



Or you can walk past the big  
stairs, and enter the doors  
on the right.





## BEFORE THE SHOW

Before you go inside the theatre, you will need a ticket. You may already have your ticket, or you may need to collect it from the Box Office.

There may be other people and families waiting to collect their tickets, too.



The foyer is where we wait  
for the doors of the theatre to open.

Before going inside the theatre,  
you may like to have something to eat  
or drink or use the toilets.

# DRAMA THEATRE



The show is in the Drama Theatre.  
The doors will open about 15 minutes  
before the show. There may  
be a queue to enter.



Before you go inside the theatre,  
Sydney Opera House staff will ask  
for a bag inspection.

You show them your bag,  
and they take a look inside.



The Sydney Opera House staff  
will scan your ticket.





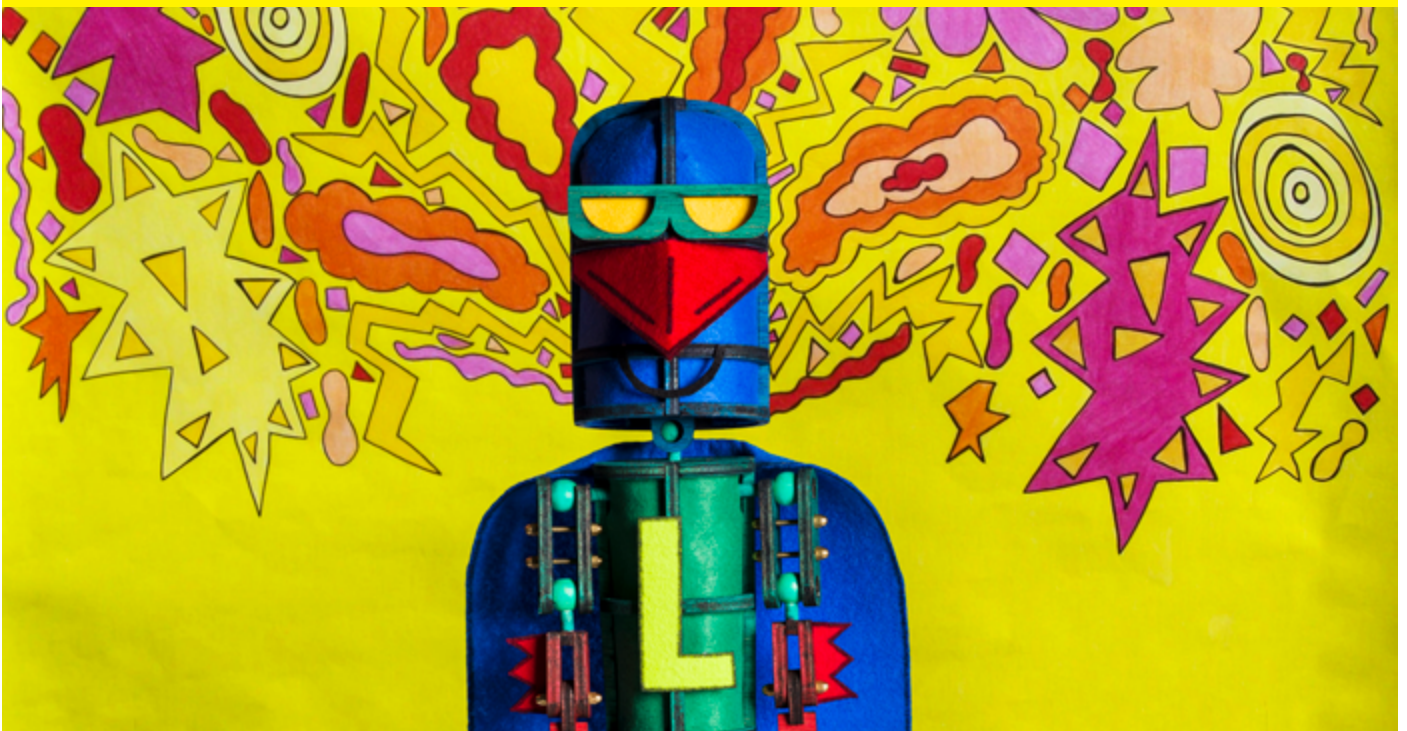
## SEATING

You will see an usher waiting at the door to the theatre. You will need to show the usher your ticket before you go inside. The ushers can help you find your seat or you can find it yourself. The theatre space will be darker than the foyer.

On the stage, you will see a set for the show. Before the show starts, two performers will come onto the stage and introduce the puppets.

3

## The Performance



The play will go for about 80 minutes.  
You might like to bring some sunglasses  
or headphones from home to wear  
inside the theatre.



## TIM SHARP AND LASER BEAK MAN

Laser Beak Man is a superhero created by Australian artist, Tim Sharp.

Tim has Autism. When he was little he couldn't speak so drawing became a way of helping him communicate. It also helped him learn to speak!

He invented Laser Beak Man when he was 11 years old. He draws pictures of him every day. Laser Beak Man has helped Tim showcase his great sense of humour and intelligence to the world.





## DID YOU KNOW?

- Tim is the first ever artist with Autism to have his art made into an animated TV series
- Tim is a world famous artist - he has had many exhibitions and his artwork is sold internationally
- Tim was a two-time finalist for Queensland Young Australian of the Year
- Tim's Mum, Judy, wrote a bestselling book about his life called **A Double Shot of Happiness**
- Tim created a brand new artwork for Arts Centre Melbourne and the Melbourne premiere of Laser Beak Man called **Melbourne for Everyone**



## WHAT WILL YOU HEAR?

There is a live-band in the theatre. They perform in a space in front of the stage which is known as the **Orchestra Pit**. You will hear drums, guitars, a keyboard and singers. The lead singer's name is Sam. He is from a band called **Ball Park Music**. Do you know that band?

Sam and the band play music all through the performance. At the start of the play they sing about a make-believe city called **Power City**.

This is where the story takes place.



## WHAT WILL YOU SEE?

There are large screens on the stage. On these screens you will see some animations. These are animations of Tim Sharp's artwork. They are bright and colourful.

All the characters in Laser Beak Man are puppets. You will see actors wearing grey clothing who control the puppets' movements and do their voices.

Did you know there are **more than 35 puppets** in this performance?





There is no interval but if you need to take a break during the show, you can leave your seat and come out to the foyer area. You can do this whenever you need to.

There will be a **Quiet Area** in the foyer that has comfortable beanbags and nice lighting where you can relax if you want to.

You can return to the theatre and watch the rest of the show whenever you feel ready.

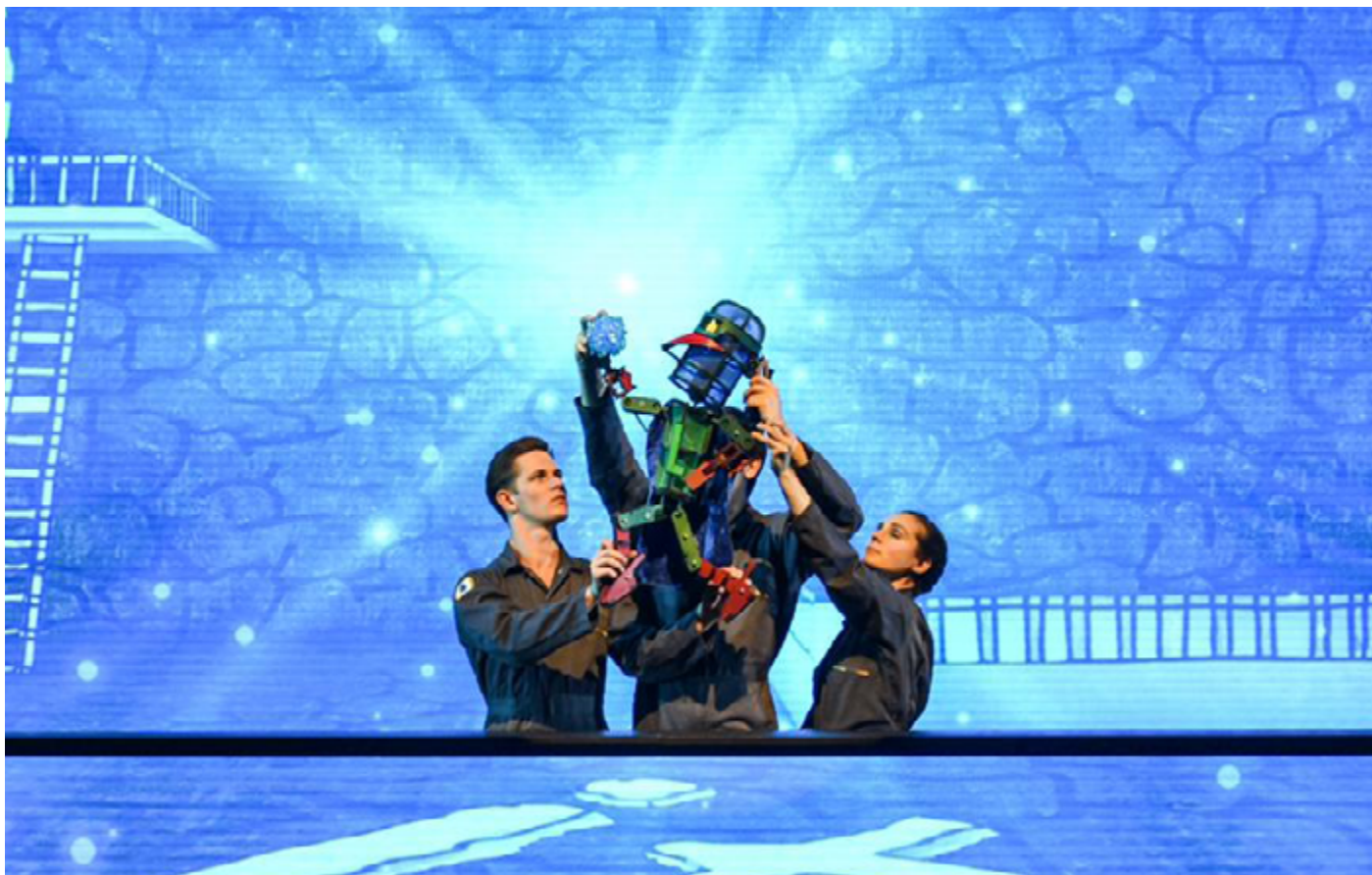
# 4

## The Story

At the start of the play, we will meet our hero, **Laser Beak Man**. Sam sings that Laser Beak Man is a boy with a beak on his face and kindness in his heart. Laser Beak Man doesn't speak. You will see him sticking up for people at school and making new friends.

Laser Beak Man makes two very good friends. Their names are **Peter Bartman** and **Emily**. You will see the three friends grow up together, from their first day at school to graduating from university.





## MAGNA CRYSTALS

At their graduation, Peter Bartman unveils his invention. This invention will give the whole world free energy with something he calls magna crystals. But there is an accident and the **magna crystals** turn Laser Beak Man into a **SUPERHERO!**



## A GREEDY MAYOR

Peter is jealous of his friend's new super powers.

The **Mayor** of Power City becomes greedy and doesn't want to share the magna crystals with the world. She plans to keep all the crystals for herself and Power City!



## GOODBYE, FRIENDS

The Mayor threatens Laser Beak Man and makes him stay in Power City. Peter Bartman and Emily argue with the Mayor. She gets angry and forces Peter and Emily to leave Power City forever. The Mayor even changes Emily's name to **Evil Emily**.





## BREAKING NEWS

You will see an animated news report about a  
**GIANT TOMATO** attacking Power City.

Laser Beak Man fights the Giant Tomato and  
turns it into a giant bottle of ketchup!  
Power City is saved.

Some people in the audience might clap and  
cheer to celebrate Laser Beak Man's victory.



## A MESSAGE FROM PETER BARTMAN

A large balloon-like object hovers over the audience. This is an AirOrb which someone is controlling by remote control backstage.

From the orb comes a message from Peter Bartman and Evil Emily. They have stolen the magna crystals.

Power City loses its power. And Laser Beak Man loses his super powers. He is unable to fly or use his lasers any more.





## THE ISLAND

Laser Beak Man is sad and lonely.  
The band plays a sad song as Laser Beak Man  
takes a journey to a deserted island.

You will see a bright pink hot air balloon flying  
over the audience. This is another drone puppet.  
The hot air balloon lands near the island.  
It looks like Laser Beak Man has a visitor.



## YOU ARE AMAZING

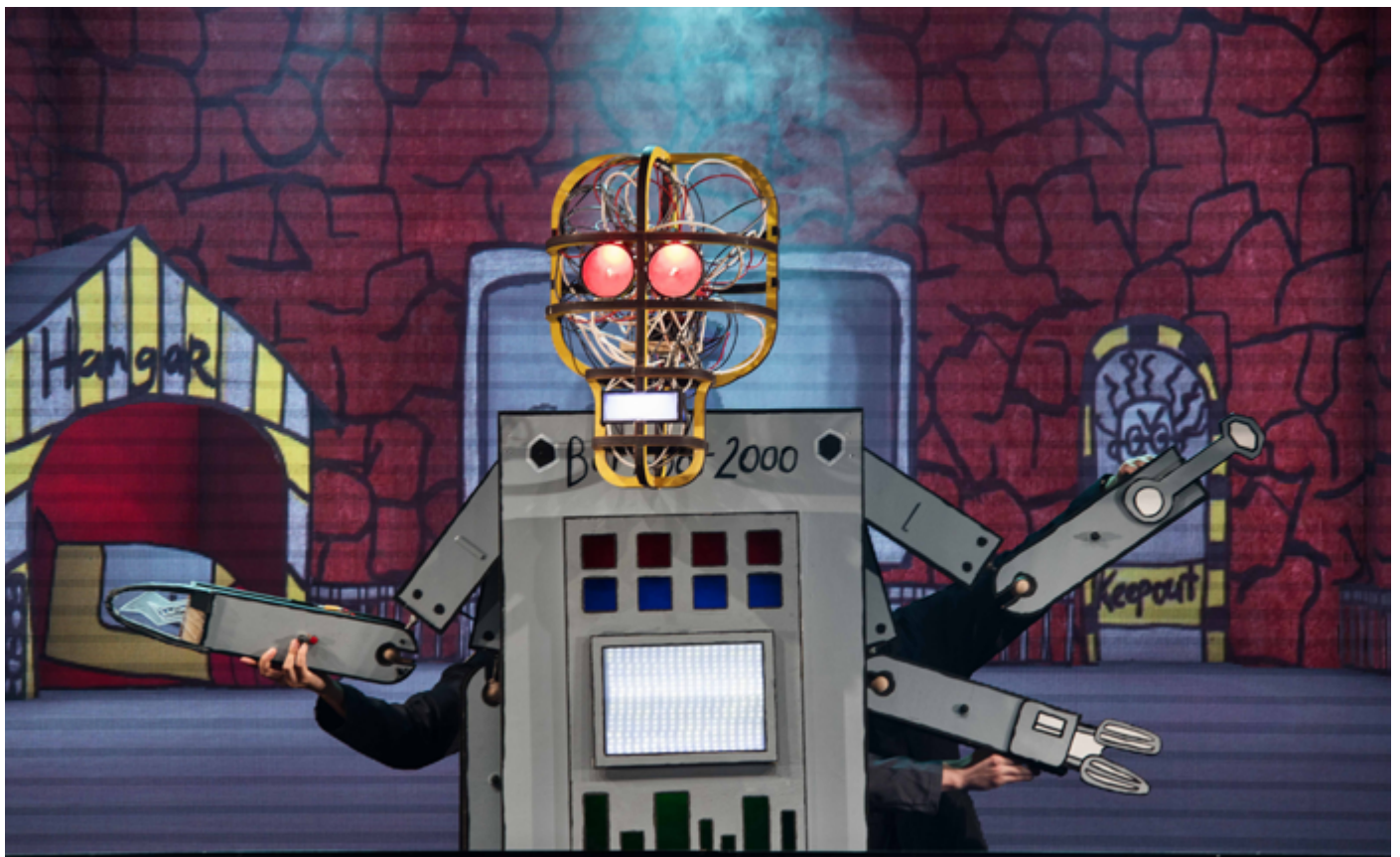
**Amazing Grace** helps Laser Beak Man realise he doesn't need super powers to be amazing.

They make invitations for a community barbecue to unite the citizens of Power City.

The hot air balloon takes off, with Grace and Laser Beak Man on board. They release the invitations from the sky. Paper invitations will gently fall on the audience.

You might even catch one!





## PETER'S EVIL PLAN

Meanwhile, Peter Bartman is working on his evil plan. You might see some smoke and flashing lights and then ... Peter becomes a huge robot with red flashing eyes.

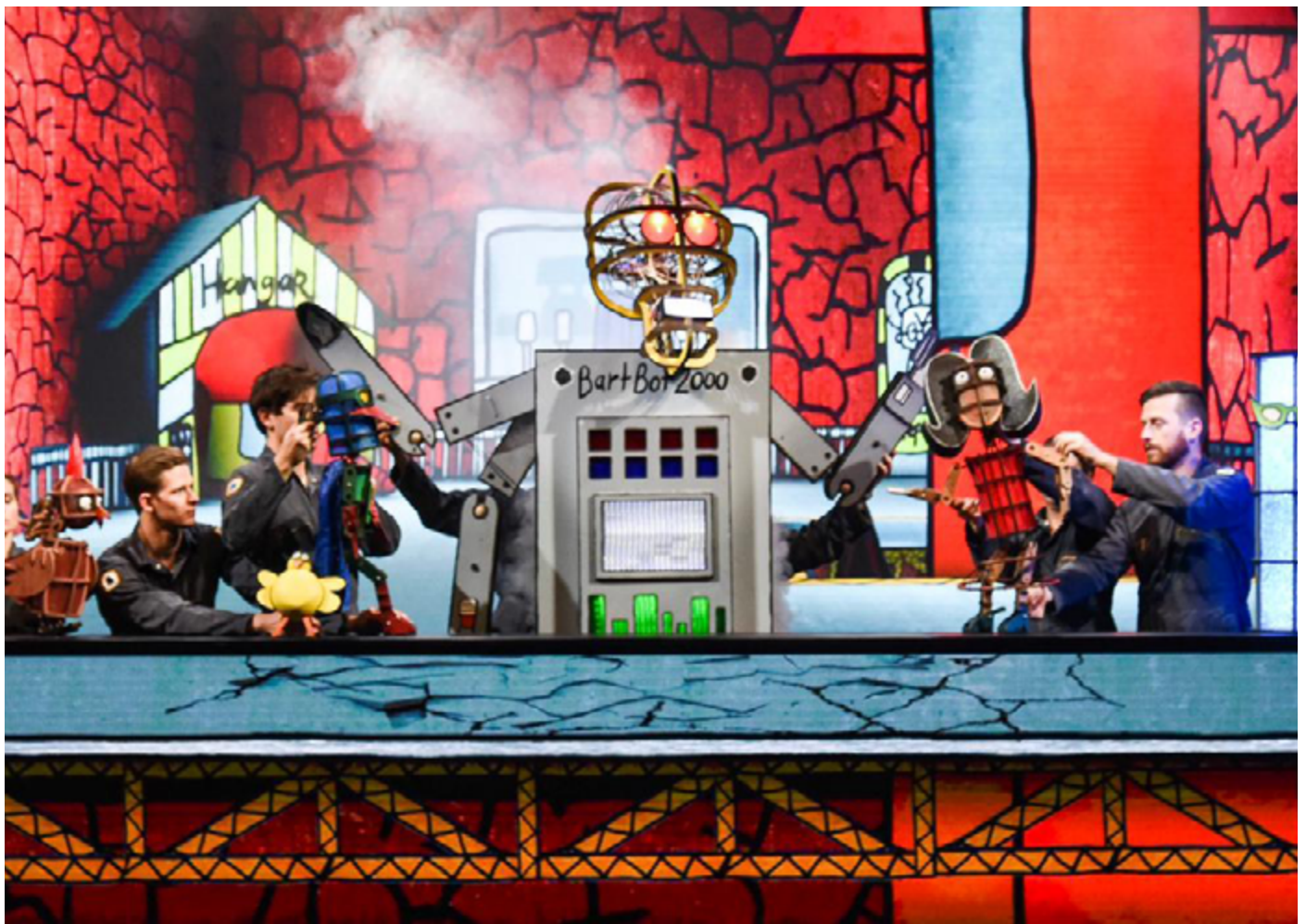
The **Black Sheep** thinks he can be friends with Peter the Robot. But Peter is mean and throws Black Sheep away.





## THE BARBECUE

At the barbecue Laser Beak Man teams up with some new friends: Black Sheep, Boar, Ram, Chicken and Barbie. Laser Beak Man realises there is strength in numbers and makes a plan to get the crystals back.



## PETER THE EVIL ROBOT

The team go underground in order to retrieve the crystals but ... SURPRISE! There are bright and flashing lights, a fake explosion and smoke. Peter the Robot appears and uses his evil powers to defeat the good guys.





## BLACK SHEEP & LASER BEAK MAN

No one believes in Laser Beak Man anymore and his team abandon him. Only Black Sheep stays behind to help Laser Beak Man. They work together to stop Peter's evil plan.



## THE SPACESHIP

Peter and Emily are in their spaceship with magna crystals and they're headed directly to the sun! Peter is going to destroy all crystals.





## WORKING TOGETHER

Laser Beak Man, Black Sheep and Emily work together to save the crystals and themselves. Peter and Laser Beak Man fight with their lasers. Black Sheep uses his special power of invisibility to help Laser Beak Man.



## THE FIGHT

Black Sheep is hurt and it looks like Peter has the better of Laser Beak Man. Emily bravely steps in to save the day.

Peter loses his robot powers and control of the crystals. On their way back to Power City, Emily shares the magna crystals with the whole world so everyone can have free power. This is just as she had wanted it to be all along.





## MAYOR EMILY

Safely back at Power City, Emily explains that Black Sheep died to save them all. The other characters realise that they underestimated the brave Black Sheep and they should have been kinder to him.

The Mayor is angry that she doesn't have the magna crystals all to herself. The citizens of Power City vote her out and Emily becomes the Mayor!



## HAPPY ENDING

Sam and his band play a song about **happiness**.

The animations on stage become even more colourful and bright. You will see all the actors dancing with their puppets. Even Black Sheep is there!

Confetti bursts from the stage and into the audience. The audience might clap along and dance to the music. It is a very happy ending.





## CURTAIN CALL

At the end of the play, all the actors (and their puppets) and musicians will take a bow. This is called a curtain call.

During the curtain call the audience will applaud and maybe even cheer. This is how the audience thanks the actors for their performance. You can clap and cheer too, if you want to.

Tim Sharp says he loves drawing Laser Beak Man because it makes him, and the people around him, **happy**.

What do you enjoy drawing? Fill the space below with drawings that make you happy...

Thanks for coming to  
**Sydney Festival!**